

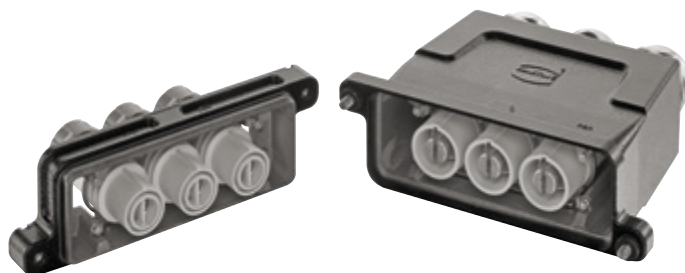
Features


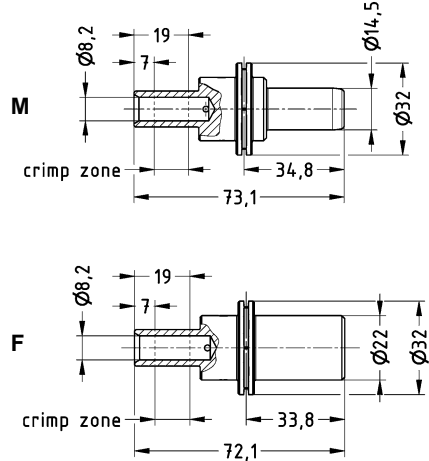

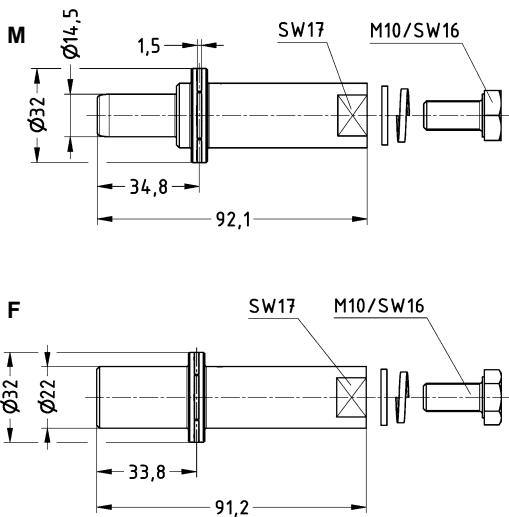
- Crimp termination
 - for wires acc. to IEC 60 228 class 5
 - for crimp dies acc. to DIN 46 235
- Screw termination
 - for termination of cable shoes and bus bars
 - must be used in Han® HPR bulkhead mounted housings only
- Low mating forces
- Contacts suitable for all frames for
 - Han® HC Modular 350
 - Han® HC Modular 350 enlarged
 - Han® 24 HPR EasyCon 350

Technical characteristics

Contacts

Material	copper alloy
Surface	silver plated
Contact resistance	≤ 0.3 mΩ
Rated current	350 A
Limiting temperature	-40 °C ... 125 °C
Mating cycles	≥ 500



Identification	Cross-section mm ²	Part number		Drawing	Dimensions in mm								
		Male contact	Female contact										
Han® TC 350 PE Crimp contact 	35	09 11 000 6172	09 11 000 6272	 <table border="1" data-bbox="981 1142 1500 1265"> <thead> <tr> <th>Cross-section</th> <th>Tool identification</th> <th>Stripping length</th> <th>Ø</th> </tr> </thead> <tbody> <tr> <td>35 mm²</td> <td>12</td> <td>26 mm</td> <td>8.2 mm</td> </tr> </tbody> </table> <p>For stranded wire according to IEC 60 228 Class 5</p>	Cross-section	Tool identification	Stripping length	Ø	35 mm ²	12	26 mm	8.2 mm	
Cross-section	Tool identification	Stripping length	Ø										
35 mm ²	12	26 mm	8.2 mm										
Han® TC 350 PE Screw contact 	≤ 120	09 11 000 6158	09 11 000 6258	 <p>Tightening torque 14 Nm for cable shoes ≤ 120 mm² While applying the tightening torque please hold the contact with screw driver 17</p>									