

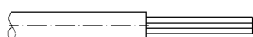
Features

- Crimp termination
- Contacts can be unlocked from the mating side
- Compatible with Han® 200 A module with axial screw termination

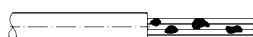
Technical characteristics

Specifications	DIN EN 60 664-1 DIN EN 61 984 EN 50 124-1
Inserts	
Number of contacts	1
Electrical data acc. to DIN EN 61 984	
Rated current	200 A
Rated voltage conductor - ground	1000 V
Rated voltage conductor - conductor	1000 V
Rated impulse voltage	8 kV
Pollution degree	3
Insulation resistance	≥ 10 ¹⁰ Ω
Material	Polycarbonate
Limiting temperatures	-40 °C ... +125 °C
Flammability acc. to UL 94	V 0
Mechanical working life	≥ 500 mating cycles

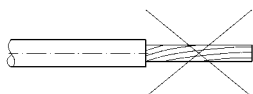
Assembly Details



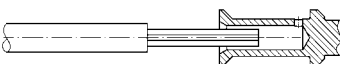
Cut the cable square and strip the insulation



The copper strands must be cleaned from dirt and oxide film



Copper strands must not be twisted



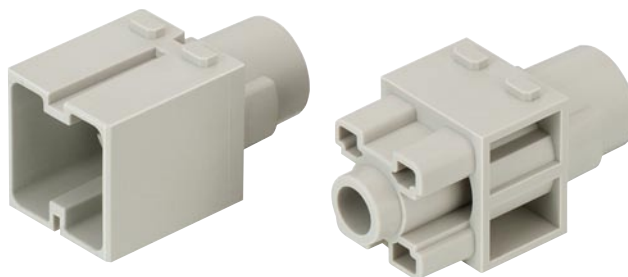
Insert the cable strand completely into the crimp ferrule.
Check insertion via inspection hole


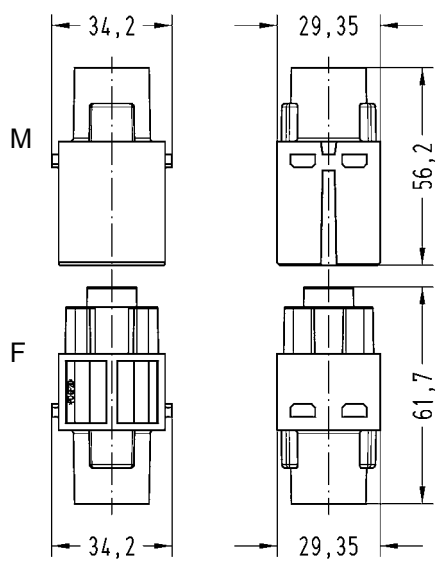
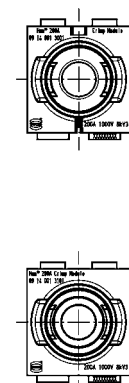
Contacts


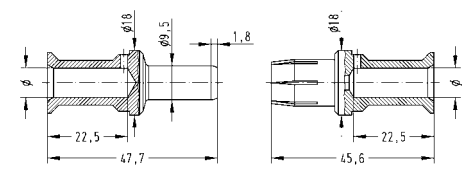
Power contacts	
Material	Copper alloy
Surface	
- hard-silver plated	3 μm Ag
Contact resistance	≤ 0.3 mΩ
Crimp terminal	
- mm ²	25 - 70 mm ²
Max. insulation diameter	18 mm
Stripping length	22.5 mm

Number of contacts

1



Identification	Part-Number		Drawings	Dimensions in mm
	Male insert (M)	Female insert (F)		
Han® 200 A module Crimp terminal 	09 14 001 3001	09 14 001 3101		Contact arrangement: view from termination side 

Identification	Wire gauge mm ²	Part-Number		Drawings	Dimensions in mm															
		Male contacts (M)	Female contacts (F)																	
Crimp contacts* Silver plated 	25 35 50 70	09 11 000 6120 09 11 000 6121 09 11 000 6122 09 11 000 6123	09 11 000 6220 09 11 000 6221 09 11 000 6222 09 11 000 6223		<table border="1"> <thead> <tr> <th>Wire gauge</th> <th>Ø</th> <th>Stripping length</th> </tr> </thead> <tbody> <tr> <td>25 mm²</td> <td>7.0</td> <td>22.5 mm</td> </tr> <tr> <td>35 mm²</td> <td>8.2</td> <td>22.5 mm</td> </tr> <tr> <td>50 mm²</td> <td>10.0</td> <td>22.5 mm</td> </tr> <tr> <td>70 mm²</td> <td>11.5</td> <td>22.5 mm</td> </tr> </tbody> </table> <p>for stranded wires acc. to IEC 60 228 class 5</p>	Wire gauge	Ø	Stripping length	25 mm ²	7.0	22.5 mm	35 mm ²	8.2	22.5 mm	50 mm ²	10.0	22.5 mm	70 mm ²	11.5	22.5 mm
Wire gauge	Ø	Stripping length																		
25 mm ²	7.0	22.5 mm																		
35 mm ²	8.2	22.5 mm																		
50 mm ²	10.0	22.5 mm																		
70 mm ²	11.5	22.5 mm																		

* Crimp zone acc. to DIN EN 46 235